

TECHNICAL SPECIFICATIONS - EST PV MODULES

Electrical Characteristics *	EST-3	EST-5	EST-10	EST-12	EST-15	EST-20	EST-25	EST-37
Power (Pm) in Watts (nominal)	3	5	10	12	15	20	25	37
Open Circuit Voltage (Voc) in Volts	10	10.5	21	21	21	21	21	21
Short Circuit Current (Isc) in Amps	0.42	0.67	0.67	0.73	0.92	1.35	1.68	2.4
Voltage at Maximum Power (Vmp) in Volts	8.2	8.2	17	17	17	17	17	17
Current at Maximum Power (Imp) in Amps	0.37	0.61	0.59	0.71	0.88	1.18	1.47	2.17
Maximum System Voltage	600V	600V	600V	600V	600V	600V	600V	600V
Physical Parameters (Refer drawing below)								
Solar Cells per Module (Units)	18	18	36	36	36	36	36	36
Length x Width x Thickness (L x W x T) mm	185x185x22	285x185x22	300x345x22	355x345x22	425x345x22	515x345x22	665x345x34	470x660x34
Weight - Kg	0.6	1	1.2	1.4	1.6	2.2	2.6	3.5
Mounting Holes Pitch (Y) - mm	92	142	150	177	212	257	332	235
Mounting Holes Pitch (X) - mm	165	165	325	325	325	325	325	640
Area - Sq M	0.03	0.05	0.10	0.12	0.15	0.18	0.23	0.31
Junction Box	2 terminal	2 terminal	2 terminal	2 terminal	2 terminal	2 terminal	2 terminal	2 terminal

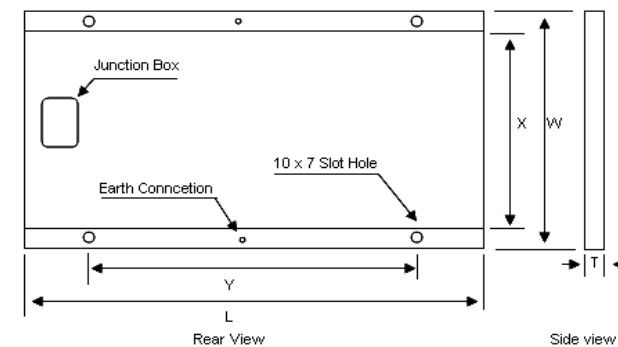
* Measurement Tolerance on Power +/- 5%. All electrical parameters specified at STC : 25°C cell temperature; 100mW/cm² irradiance; AM 1.5

Other Characteristics

Type of Cell : Mono / Multi Crystalline Silicon	* The Standard range of modules is supplied without diodes. However, diodes can be provided on specific customer request at extra cost
Front Face : Tempered Glass (Low Iron)	
Encapsulate : Ethylene Vinyl Acetate	
Frame : Anodized Aluminium	
Junction Box : Weather Proof Nylon 6	* Due to constant product modifications, ECOSOLAR reserves the right to amend the above specifications without prior notice.
Temp. Coefficients : Voltage - 0.123V / °K	
Current +4.4 mA / °K	
Power -0.47% / °K	
NOCT : 47+/-2°C	* Warranty : Up to 10 Years Limited Extended Warranty

Mounting Details

All dimensions in mm and tolerances ± 2mm



www.ecosolar.com.sg